

DATA WAREHOUSE

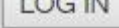
LOGIN

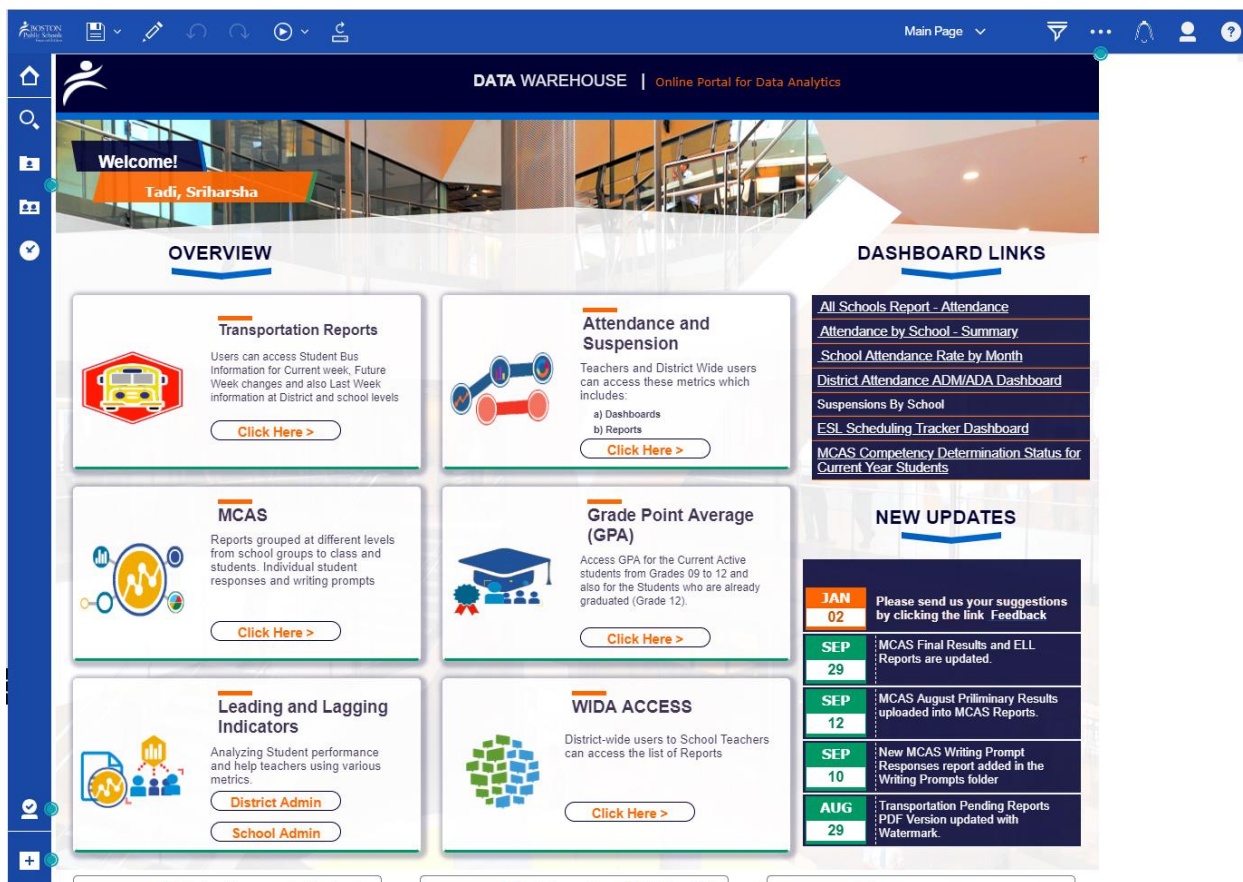
Schools across the District and also Central Office staff can use the following link to access the Data Warehouse: <https://bpsdepot.mybps.org/dw/> (Please clear the **Browser Cache**, then open a **new Browser** to get to the link)

The screenshot shows the homepage of the Boston Public Schools Data Warehouse. The header includes the BPS logo and the text "BOSTON PUBLIC SCHOOLS Focus On Children" and "DATA WAREHOUSE Online Portal for Data Analytics". A "Sign In" link is visible. Below the header is a banner image of a marching band. A "What's New?" section contains text about the system upgrade and a list of features: "Directly access Modeled or Un-Modeled data from multiple sources anywhere including personal files.", "Unleash your creativity with simple drag and drop and automated visualizations on Attendance to Test Scores.", "Quickly analyze & visualize your data to get the answers you need.", and "Share and discuss with your team or group and Take instant action with live data analysis." Below this is a "Documents" section with two buttons: "Data Warehouse 101 Document" and "Transportation Reports User Guide". The footer contains contact information: "Questions or Suggestions? | E-mail Us > 2300 Washington Street Roxbury, MA 02119 | (617)-635-9000" and "Copyright ? 2018 Boston Public Schools | All rights reserved."

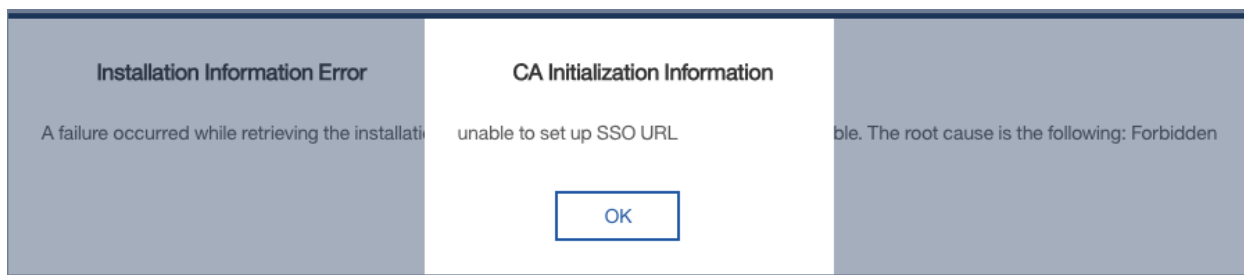
STEP 1: Click on the [Sign In](#) link which takes you to the following Login Screen (URL: <https://bpsdepot.mybps.org/dw/bi/>)

The screenshot shows the login screen of the Boston Public Schools Data Warehouse. The header is identical to the homepage. The main content area features a "SIGN IN" button and a login form with fields for "User Name" and "Password", and a "LOG IN" button. Below the form is a "Forgot Your Password?" link and a disclaimer: "In logging on to Data Warehouse, I certify that I have read and agree to all the terms of the Boston Public Schools' Acceptable Use Policy. I also certify that I understand that, pursuant to state and federal law, I am responsible for the security of all student data to which I may have access." The footer is also identical to the homepage.

STEP 2: Please type in your BPS User credentials and click  button and wait for couple of seconds. The system logs into the following Welcome page



STEP 3: In case the following Warning Message appears,



Please clear the **Browser Cache**, then open a **new Browser**, use the <https://bpsdepot.mybps.org/dw/> link and try again by open a new browser (Usually the warning message appears for the first time and not the second time)

LOGIN AS DIFFERENT USER

Users can login as a different user by clicking the User Icon and click the Sign Out from the list which directs to the <https://bpsdepot.mybps.org/dw/bi/>

